



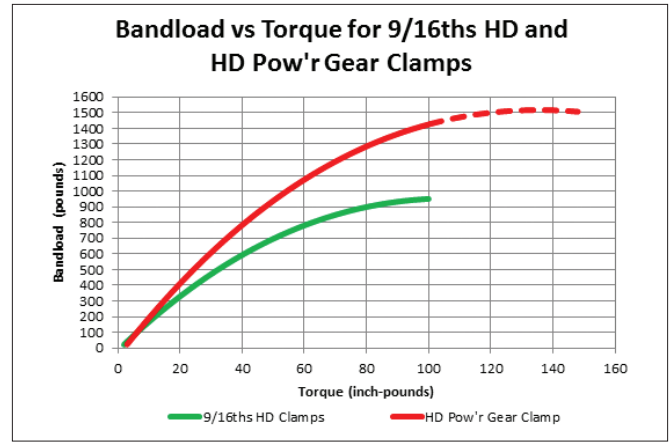
# HEAVY DUTY POW'R-GEAR RED SHIELD NO-HUB COUPLINGS



Prior to the introduction of heavy duty no-hub couplings, a locator lug was molded into the cast iron fitting to provide the installer with an indicator for proper coupling installation. After the introduction of heavy duty couplings, the location of this lug caused a problem. Why? Heavy duty couplings are wider than standard duty couplings and must seal over the lug. This is difficult in that the irregularity in the fitting surface creates a leak path. The in-field response to this has been for the contractor to grind down the lug before installing the coupling. The **Heavy Duty Pow'r-Gear** coupling solves this problem in

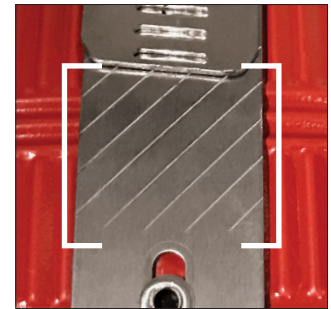
that it fits properly between the locator lug on the fitting and the pipe. So not only does the **Heavy Duty Pow'r-Gear** coupling solve this problem, it improves the process. **It eliminates the need to grind down the lug.** In addition, the coupling has fewer clamps than a conventional heavy duty, which reduces installation time. So, where the contractor must use a heavy duty coupling because of its structural reinforcement benefit and higher sealing capacity, **turn to Ideal's Heavy Duty Pow'r-Gear...the new solution in heavy duty couplings!**

# HOW DID WE DO IT? IT'S ALL ABOUT THE CLAMP!



## PRODUCT FEATURES:

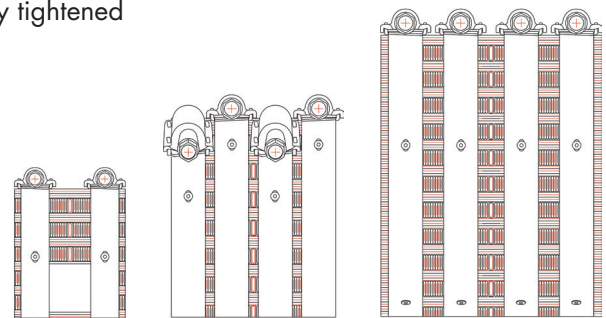
- 5/8" band width: 11% more sealing surface than conventional HD clamps
- 0.028" thick Band
- ASTM C564 Gasket
- Long Profile Housing: 135% greater number of active thread vs conventional HD clamps
- 2 Piece Orbital Formed Housing Assembly vs conventional staked housing design
- Housing gauge: 50% greater than conventional HD clamps (0.060" vs 0.040")
- All 300 grade SS construction
- 5/16" Un-slotted Hex Head Screws
- Bi-directional Shield Corrugations: Grips the gasket and keeps it from stretching laterally on the joint
- Installation Indicator provides a visual mark that the coupling is properly tightened



Visual Installation Indicator

## PERFORMANCE FEATURES:

- High Efficiency Design: A maximum transfer of band tension yields a higher resultant band load compared to conventional HD clamps
- Ultimate Torque Rating (150 in-lbs)
- Installation Torque Rating (80 in-lbs)
- Shield Gauge: 0.007" allows greater compression to reach the joint at a given installation torque. Insures a flush fit of the rubber gasket on pipes of dissimilar outside diameter



## CERTIFICATIONS & STANDARDS:

- NSF certified to ASTM C1277
- Tested by NSF International and conforms to ASTM C1540 performance requirements (Shear, Deflection and Unrestrained Thrust test)
- UPC Listed
- Conforms to CISPI 310

## FIND YOUR PART NUMBER

Size	Installation Torque (in-lbs)	No. of Clamps Per Coupling	Coupling Width	Part No.
1-1/2"	80	2	2-1/8"	6217P8G
2"	80	2	2-1/8"	6218P8G
3"	80	2	2-1/8"	6219P8G
4"	80	2	2-1/8"	6220P8G
5"	80	4	3"	6221P8G
6"	80	4	3"	6222P8G
8"	80	4	4"	6223P8G
10"	80	4	4"	6230P8G



IDEALTRIDON.COM | PROVEN DESIGNS, BILLIONS OF TIMES

GLOBAL HEADQUARTERS

8100 TRIDON DRIVE SMYRNA, TN USA 800.251.3220 | 615.459.5800

USA | MEXICO | CHINA | JAPAN | POLAND | INDIA